

SINGLE-ENDED BEAM

RL32018S-HE

Stainless Steel, Hermetically Sealed, NTEP Certified 1:5,000 Class III Multiple Cell, IP69K



APPROVALS



Interchangeable Products

RICE LAKE WEIGHING SYSTEMS

RL32018S-P (non-NTEP) . page 137

VPG® SENSORTRONICS®

65083..... page 320

VPG® CELTRON

SQB-HSS..... page 228

Weigh Module Available

RICE LAKE WEIGHING SYSTEMS

RL1800 Series..... page 62

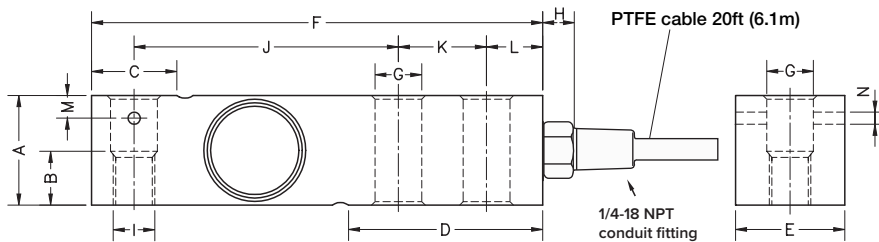
Dimensions

Picture is a representation of actual product

Rated Capacity	A	B	C	D	E	F	G	H	I	J	K	L	M	N
1,000-4,000	1.24	0.59	0.96	2.20	1.24	5.12	0.53	0.70	1/2-20 UNF	3.00	1.00	0.62	0.25	0.13
5,000-10,000	1.50	0.75	1.45	2.99	1.50	6.75	0.80	0.70	3/4-16 UNF	3.75	1.50	0.75	-	-

Order Information

Load Rating	Part #	Est. Weight	Price
1,000 lb	189176	3 lb	Consult
2,000 lb	189178	3 lb	Consult
2,500 lb	189179	3 lb	Consult
4,000 lb	189181	3 lb	Consult
4,000 lb	208667	3 lb	Consult
5,000 lb	189182	5 lb	Consult
10,000 lb	189183	5 lb	Consult



Specifications

Full Scale Output:

3.0 mV/V ±0.05% current matched

Output Resistance:

350 (± 3) ohm

Input Resistance:

400 (± 20) ohm

Material/Finish:

Stainless steel

Temperature:

Compensated range
14° F to 104° F (-10° C to 40° C)
Operating range
0° F to 200° F (-18° C to 93° C)

Seal Type:

Hermetically sealed, IP69K

Safe Overload:

150% full scale

Safe Sideload:

100% full scale

Rated Excitation:

5-10 VDC (15 V maximum)

Combined Error:

0.017% full scale

Insulation Resistance:

>5,000 megohms

Cable Length:

20 ft PTFE cable

Cable Color Code:

Red +Excitation
Black -Excitation
Green +Signal
White -Signal

Warranty:

Two-year limited warranty

Approvals:

cFMus
NTEP